

Automated Logic's energy solutions balance smart energy use with a comfortable work environment.

Control your buildings with intelligent, energy-saving strategies. Reduce operating costs. Maintain a comfortable and productive work environment. And back it up with data that proves you're on track with your sustainability goals.



Nothing could be simpler, right?

With WebCTRL®, Automated Logic's building automation system, the answer is yes. Our system delivers a total building solution that puts you in complete control of your energy program. There's no need for add-ons or third party software. From measuring occupant comfort to powerful reporting to lighting control, our system does it all.

Today, nothing is more important to successful building operations than meeting the challenges caused by economic pressures and government mandates to save energy. Facility managers know all too well how their energy decisions can impact comfort, and how comfort can impact productivity. Research has linked comfort with critical workplace issues ranging from error rates to absenteeism. Studies



have also shown similar links between comfort and successful learning in educational environments. The key is to strike a successful balance between energy use and comfort, and to maintain that balance simply and effectively.

Only WebCTRL's energy suite provides a total solution to achieve these energy and comfort goals. But this shouldn't come as a surprise. After all, Automated Logic has helped customers in the public and private sectors manage their energy use, operating costs and work environments for



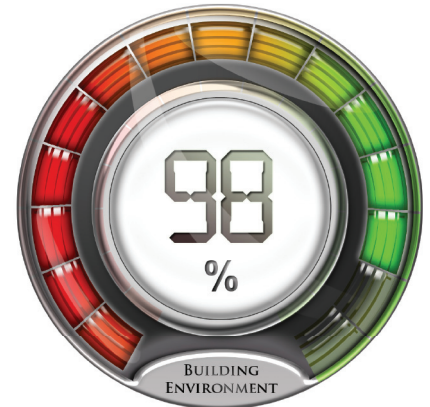
over three decades. We continue to lead the industry with the Environmental Index™ and EnergyReports™, the newest tools developed for today's energy priorities. And we've taken building automation one step further by adding lighting controls to our energy suite offering.

So one building control system is all you need to reach your sustainability goals. It's that simple.

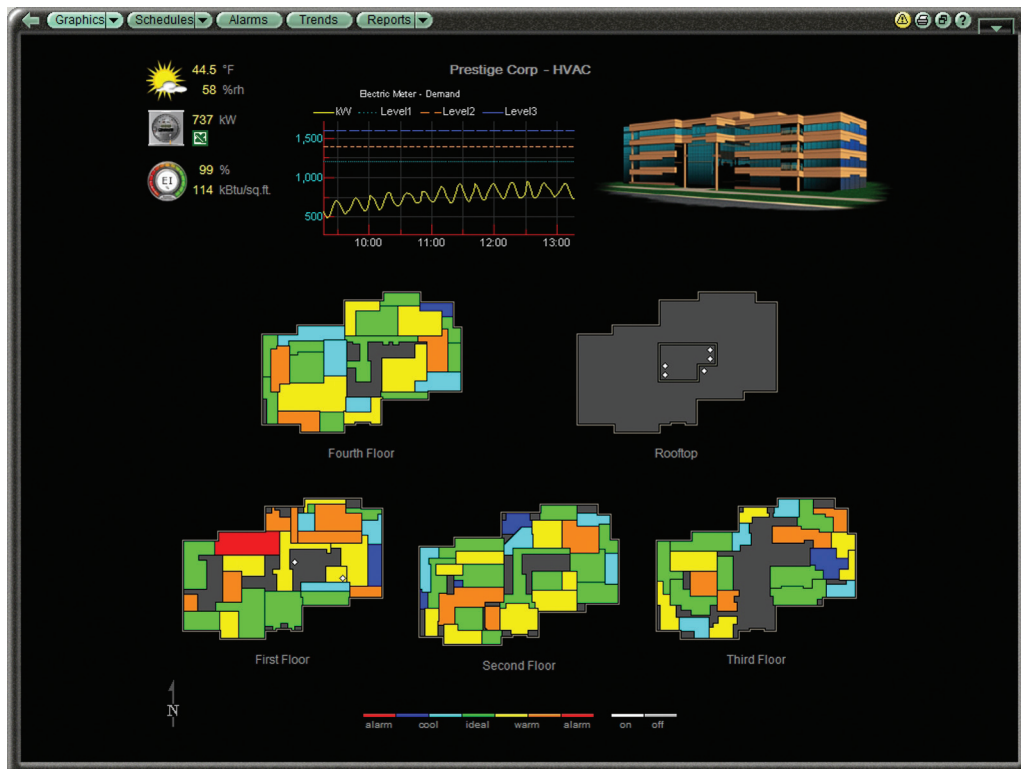


Our Environmental Index provides a *real* measure of workplace or classroom comfort.

The Environmental Index works – and works simply. It's calculated only when a zone is occupied, indicating how closely a zone temperature maintains its heating and cooling setpoints, and expresses it as a percentage. The Environmental Index registers on an analog gauge, recording poor to optimal (0% to 100%) conditions on a red-to-green color spectrum. It can also incorporate relative humidity and contaminants such as CO₂ into the results. Every occupied zone, area, floor and building can be calculated, weighted for priority, trended and reported.



Expressed as a percentage, the Environmental Index indicates poor to optimal conditions on an easily read gauge.



Facility managers can determine the Environmental Index by zone, area, floor (shown here) and building.

Easily accessed through Automated Logic's WebCTRL building automation system, the Environmental Index helps facility managers identify operational issues and target the areas that need improvement. And WebCTRL can easily generate standard format reports to include Environmental Index data needed to track system performance.

Incorporating the Environmental Index into your control strategies can yield dramatic results. In just six months, the Crosby (Texas) Independent School District, located within Houston's metropolitan area, reduced energy consumption by 1.6 million kWh, saved \$131,000 in energy expenditures and significantly improved comfort in targeted areas.

A building's Environmental Index is dynamically displayed on a screen "dashboard", revealing the occupant comfort level on each floor as well as the overall measurement for the building.



"We aren't just measuring energy consumption, but 'consumer' comfort as well...(with) the potential to make a significant difference."

Jerry Blizzard
 Director of Buildings and
 Maintenance
 Crosby Independent School
 District

Only EnergyReports gives you the complete picture!

Your success in balancing energy use with comfort, and achieving sustainable building operations, depends upon your access to critical building information. With EnergyReports, you'll get all the information you need.

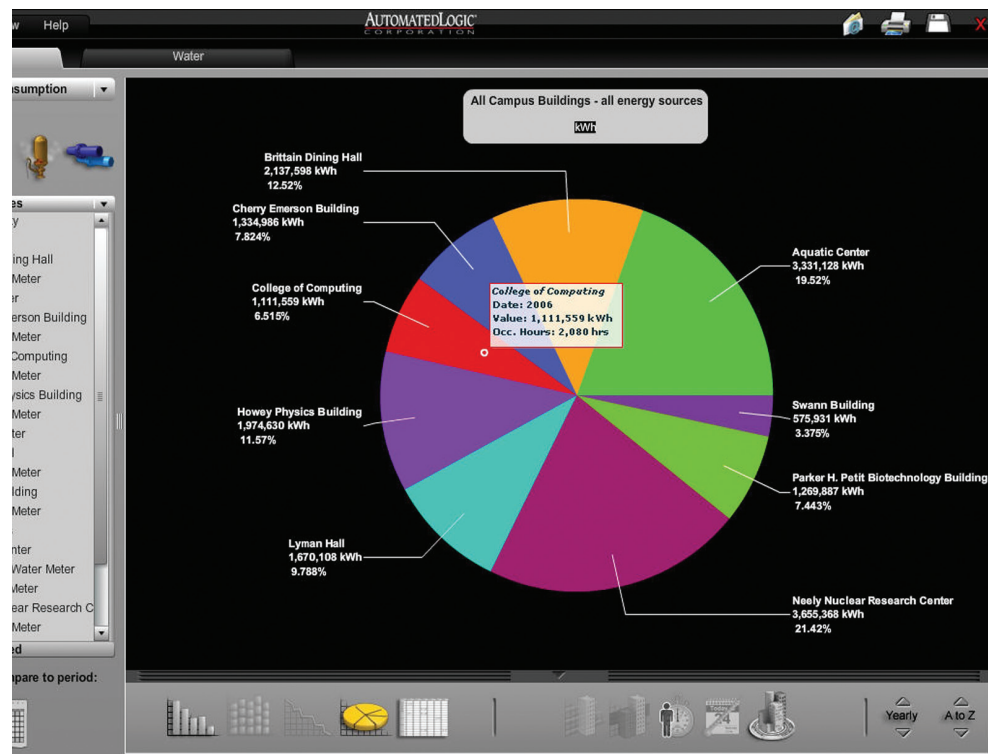


EnergyReports provides comprehensive building management information including occupied/unoccupied usage (shown here).

Versatile and easy to use, EnergyReports generates data on the fly or automatically sends it in the format you specify. Leveraging WebCTRL's extensive and scalable trending capabilities*, it provides a fully integrated solution, easily installed and deployed. And unlike any other management tool, EnergyReports can display the Environmental Index alongside energy usage data for a graphic comparison of efficiency and comfort.

Accessed through a standard browser, EnergyReports offers a variety of colorful graphical formats as well as spreadsheet-style data. Reports include occupied/unoccupied usage, Cooling Degree Days (CDD), Heating Degree Days (HDD), low-median-high data and benchmark comparison data. Users can normalize consumption information or

Reports can be generated in colorful pie charts...



convert it to other units including cost and CO₂ emissions. An integrated Report Manager function can automatically schedule, send and archive monthly, quarterly or yearly reports in Excel® spreadsheet or Acrobat® PDF formats.

* Requires WebCTRLv4 or later software

... or bar charts, for single- or multiple-site WebCTRL installations.

Our energy suite provides complete building solutions to help you achieve your sustainability goals.

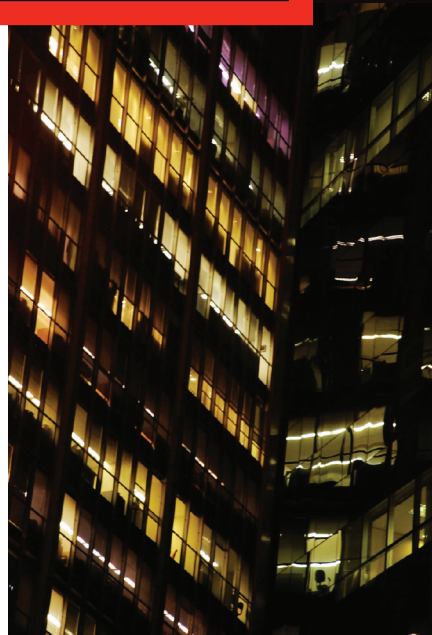
And now with the addition of lighting control, we've got your building completely covered.

Automated Logic's Lighting Control (LC) line brings the power and simplicity of WebCTRL to



your building's lighting controls. Our newest technology provides superior lighting control with complex lighting

management functionality for occupancy control, dimming, scheduling, daylight harvesting and more, all designed to optimize usage and save on energy costs. All this, without the need to integrate to a third-party system. Now that just makes sense!



The power of one: WebCTRL. The only control system that provides a total energy solution.

No other system surpasses WebCTRL's capabilities to help you better analyze your energy consumption, develop more effective conservation strategies and ultimately save on operating costs. After all, WebCTRL revolutionized the DDC industry with its operational freedom and flexibility, pioneering graphics, intuitive ease of use and feature-rich design.



WebCTRL continues to provide access to your building systems from anywhere on the planet with most web-enabled devices: desktops, laptops, PDAs and cell phones. It supports local-to-global energy management and control, from single-user/single-site to multi-user, multi-site or multi-server installations. Whether it's setpoint optimization, demand reduction, load-to-source matching, server virtualization, effective scheduling, static pressure reset or more, we never stop delivering new control strategies to help you save energy and deliver a return on your investment.

Automated Logic. For over three decades, we've spent all of our energy working to help you save energy.

As energy costs, government regulations and environmental concerns continue to rise, facility managers are under increasing pressure to reduce energy use along with operating costs. Now more than ever, public and private entities need a building automation partner experienced in sustainable energy conservation and control.

At Automated Logic, we're ready to be your partner. Our mission has always been to provide intuitive, intelligent and easy-to-use building automation systems that ensure energy savings and occupant comfort — systems that excel in their power of simplicity.

Now we can provide a total energy control solution to help you:

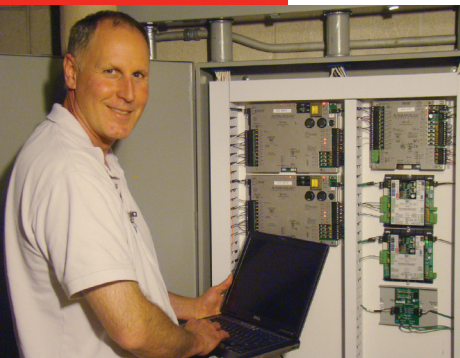
- Successfully balance energy savings with occupant comfort
- Lower your energy and operating costs
- Increase your ENERGY STAR® rating
- Help you achieve LEED® certification

For more information or to schedule an on-site demonstration, call us at 770/429-3000, contact your authorized Automated Logic representative or visit www.automatedlogic.com.



"Our prediction at the time was we'd be saving about 30% in energy use on an annual basis by installing ALC controls and by making some other energy conservation measure improvements... within a year we'll probably exceed the 30% savings that we had estimated."

Alan Hebert, E.E.
Project Manager
Department of Utilities and Energy Management
Cornell University



"By keeping energy management functions in-house, the District has saved thousands more in outsourced energy consulting and maintenance fees."

Jeff Christens
Steamfitter/DDC Systems
Green Bay Area Public School District

Energy use at Bexar County's (San Antonio) historic Courthouse, a building more than 100 years old, was reduced 21.1% over a 20-month period following the installation of WebCTRL. Combined energy savings from all county facilities served by WebCTRL more than tripled the amount mandated by Texas law.



...the power of simplicity